

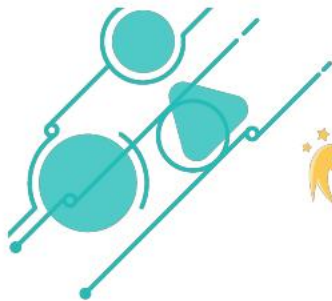


PROJECT ● Active

The castles beside and inside us

This project plan has a focus on local history and resilience. The basic idea is developed in the approach of the local history and in the parallelism of the castle towers with the internal "towers" of each person. The first activities are developed for introductions and getting to know each other. Students then learn more about their castles. They explore the castles in their area, divide into groups, take on tasks and create collaborative collections of local history in all forms (text, photos, videos, audio recordings) compiling them into a collaborative ebook. At the same time, taking their knowledge of castles to a more personal level, they are guided by the teachers in emotional awareness activities. Through them they discover themselves and discover and define aspects of their character that will help them in their mental balance.

Questo progetto ha ottenuto il premio di Qualità Nazionale ed Europeo ed inoltre un premio di Qualità per l'uso di strategie e web tools innovativi da parte degli studenti delle classe attuali seconda C e D

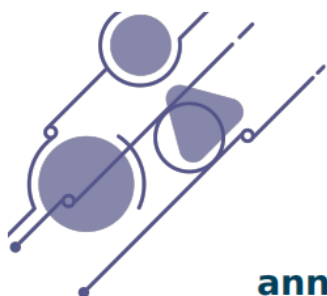


has been awarded with the eTwinning Quality label
as a pupil for the project:

The castles beside and inside us

18.10.2024





anna maria patrizia PETROCELLI

ICS Pitagora di Bernalda, Italy

is awarded with the European Quality Label

for the project:

The castles beside and inside us

12.11.2024



European School Education Platform



Santi Scimeca
Central Support Service
Project manager

